



WINDEA one

CREW TRANSFER & SERVICE VESSEL

GENERAL

Call Sign: DHNN2
IMO No.: 9707376
Flag: German
Port of Registry: Emden
Class: Bureau Veritas
Class Notation: I • Hull • MACH Light ship / Fast Utility Vessel Sea area 2
Built: 2013 Damen Shipyards Singapore / NL
Length OA: 25,68 m
Breadth OA: 10,23 m
Depth: 2,90 m
Max Draught: 2,20 m
GT/NT: 174/52
Max Speed: 25 kn
Service Speed: 20 kn
Crew: 3 pers., certified acc. STCW 95 code
PAX: 12
GMDSS Area: A1 + A2

Contact Info: Sat: +870 773155676
Mobile: +49 171 1676756
Email: windea.one@offshoreservice.de

TECHNICAL SPECIFICATIONS

Main Engine: 2x CAT C32 TTA
Total Power: 1790 kW
Propeller: Fixed-Pitch-Propeller
Generator: 2x 400 V 50 Hz 22.5kW – 28.0 kVA

Bow Thruster: 2x Hydrosta Sider 80/100
Fuel oil cap.: 22 m³
Fresh water: 1,8 m³
Black water: 0,5 m³
Consumption: 445 ltr./h @ 25 kn

Crane Type: Hydraulic operated knuckle boom
SWL: 2200 kg @ 8.60 m
Cargo Area: 90 m²
Container: 2x 10" or 2x 20"
Max deck load: 1,5 t/m²
Dead weight: 20 t

NAVIGATION & RADIO EQUIPMENT

- ARPA Radar
- Double ECDIS Transas NS 4000
- AIS
- VHF DSC-A Sailor RT6222
- 2 Radars – JRC JMA 5212-4 MK2
- VHR Radio Telephone Sailor RT6210
- Hand Held VHF Radio Telephone Sailor SP3520
- MF/HF Radio Telephone – Sailor 5000
- Navtex – JRC NCR 333
- SART McMurdo S4
- Sailor 250 Fleet Broadband Sat-phone

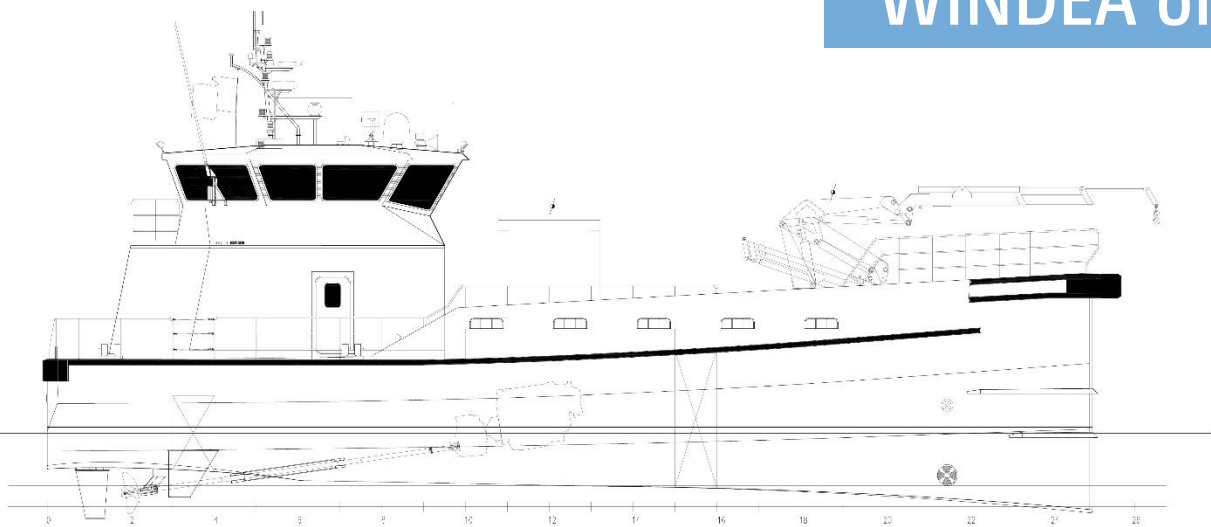
OTHER

- Certified for the carriage of DG-Cargo
- PPE Drying Room
- Entertainment System, WiFi
- CCTV
- Heated deck for safe access during winter
- Reinforced ice plating
- Fuel transfer system
- High friction Seaside Fender

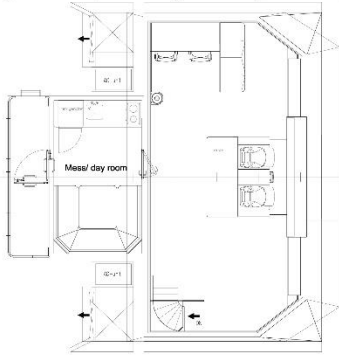
OWNER:

Schiffahrtsgesellschaft WINDEA CTV one GmbH & Co. KG
 Zum Borkumanleger 6, 26723 Emden, GERMANY

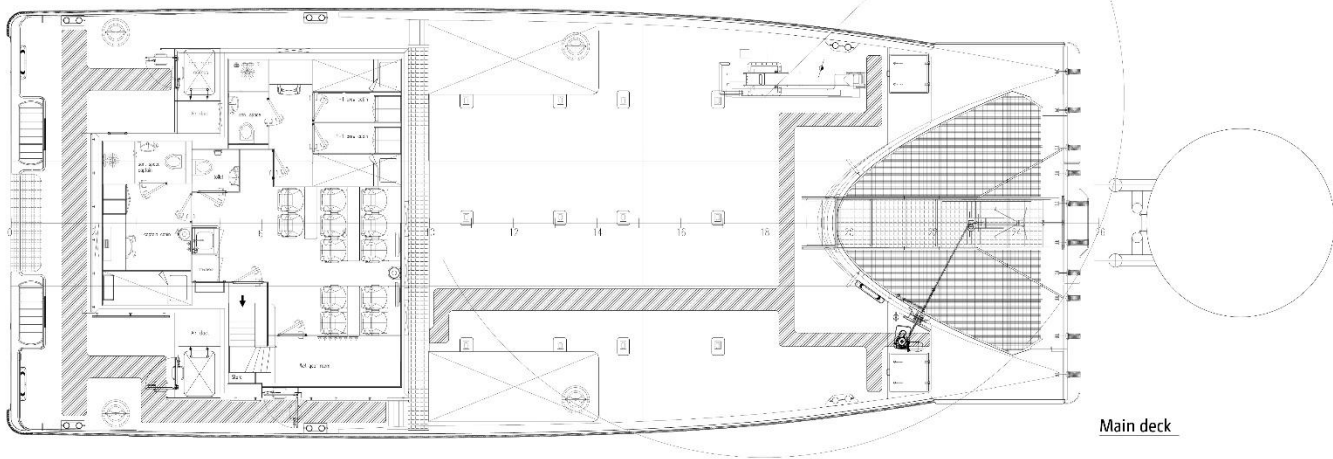
Rev. 4.2



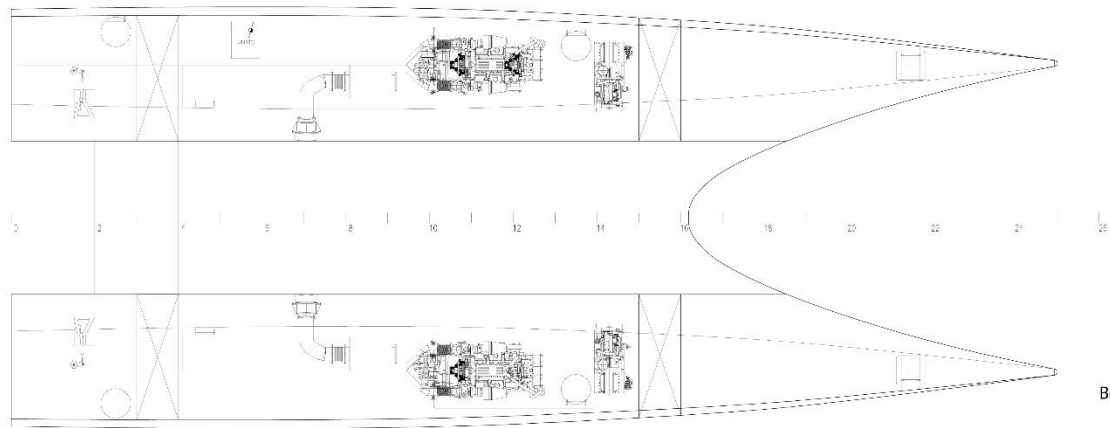
Profile



Bridge deck



Main deck



Below maindeck

EMO provides all required maritime services related to the construction and the maintenance of an offshore wind farm, from a single source.

Our Services are structured within three main sectors:

>> MARITIME SERVICES

- CREW TRANSFER, GUARD & SAFETY VESSELS
- SHIP MANAGEMENT
- CHARTER MANAGEMENT
- COORDINATION SERVICES
 - » AUDITS & SURVEYS
 - » HSE COORDINATION
 - » CONSULTING
- EMS MARITIME OFFSHORE CREWING

>> TECHNICAL & ENGINEERING SERVICES

- TECHNICAL MANAGEMENT
- PROJECT MANAGEMENT
- SUPERVISION OF NEW- AND REBUILDING
- DESIGN & CONSULTING

>> PORT & LOGISTICS SERVICES

- OWN PORT INFRASTRUCTURE
- STORAGE AND WAREHOUSING
- AGENCY SERVICES
- LOCATION ADVICE & PROJECT MANAGEMENT
- TRANSPORT ON- AND OFFSHORE
- FULL SUPPLY CHAIN MANAGEMENT
- CARGO AND SUPPLY RUNS

Due to our experiences in guard duties, crew transfers, marine coordination and on-/offshore logistics we can offer you services which are able to match all requirements of your project.

To match national and international standards, the *EMO* is certified according [ISO 9001](#) and [ISO 14001](#).