



WINDEA three

CREW TRANSFER & SERVICE VESSEL

GENERAL

Call Sign:	DHNV2
IMO No.:	9759501
Flag:	German
Port of Registry:	Borkum
Class:	Bureau Veritas
Class Notation:	I • Hull • MACH Light ship / Fast Utility Vessel Sea area 2
Built:	2014 Damen Shipyards Singapore / NL
Length OA:	25,68 m
Breadth OA:	10,23 m
Depth:	2,90 m
Max Draught:	2,20 m
GT/NT:	174/52
Max Speed:	25 kn
Service Speed:	20 kn
Crew:	3 pers., certified acc. STCW 95 code
PAX:	24
GMDSS Area:	A1 + A2
Contact Info:	Sat: +870 773909006
Mobile:	+49 171 9193326
Email:	windea.three@offshoreservice.de

TECHNICAL SPECIFICATIONS

Main Engine:	2x CAT C32 TTA
Total Power:	1790 kW
Propeller:	Fixed-Pitch-Propeller
Generator:	2x 400 V 50 Hz 22,5 kW – 28 kVA
Bow Thruster:	2x Hydrosta Sider 80/100
Fuel oil cap.:	22 m ³
Fresh water:	1,8 m ³
Black water:	0,5 m ³
Consumption:	445 ltr./h @ 25 kn
Crane Type:	Hydraulic operated knuckle boom
SWL:	2,2 t @ 8,60 m
Cargo Area:	90 m ²
Container:	2x 10" or 2x 20"
Max deck load:	1,5 t/ m ²
Dead weight:	20 t

NAVIGATION & RADIO EQUIPMENT

- ARPA Radar
- Fix installed Tetra
- Double ECDIS Transas NS 4000
- AIS
- VHF DSC-A Sailor RT6222
- 2 Radars – JRC JMA 5212-4 MK2
- VHR Radio Telephone Sailor RT6210
- Hand Held VHF Radio Telephone Sailor SP3520
- MF/HF Radio Telephone – Sailor 5000
- Navtex – JRC NCR 333
- SART McMurdo S4
- Sailor 250 Fleet Broadband Sat-phone

OTHER

- Certified for the carriage of DG-Cargo
- PPE Drying Room
- Entertainment System, WiFi
- CCTV
- Heated deck for safe access during winter
- Reinforced ice plating
- Fuel transfer system (15m³/h @ 28m)
- High pressure seawater cleaner 230 bar, 1000 ltr./h

OWNER:

Schiffahrtsgesellschaft WINDEA CTV three GmbH & Co. KG
Zum Borkumanleger 6, 26723 Emden, GERMANY

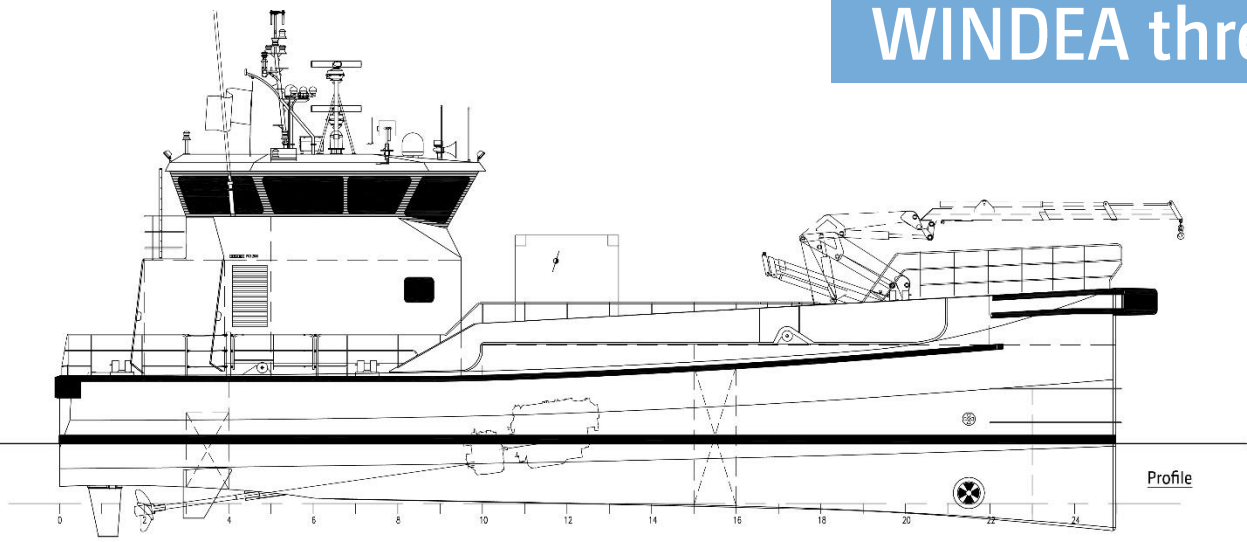
EMS Maritime Offshore GmbH FON +49 (0)49 21 – 89 07 5286
Zum Borkumanleger 6 E-MAIL info@offshoreservice.de
26723 Emden, GERMANY WWW.OFFSHORESERVICE.DE



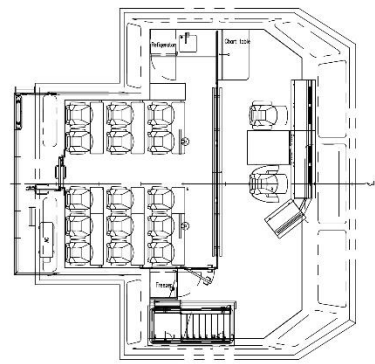
ISO 9001
ISO 14001
OHSAS 18001
BUREAU VERITAS
certification



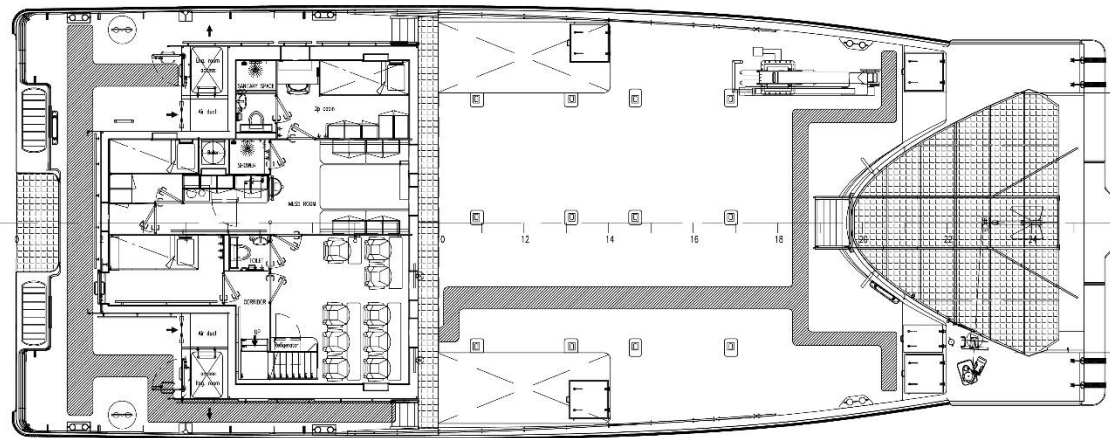
WINDEA three



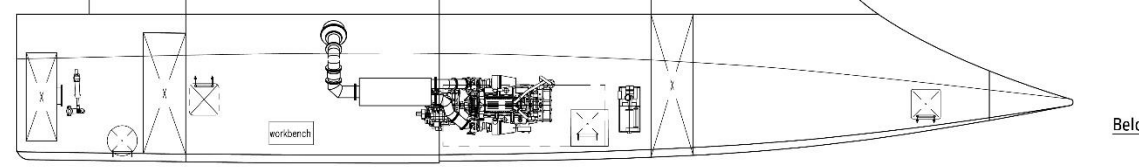
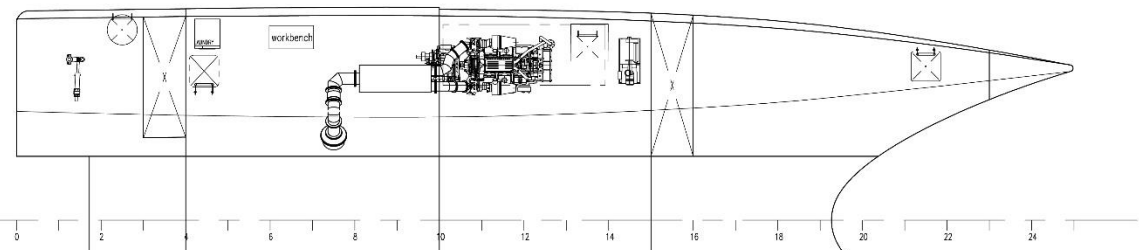
Profile



Bridge deck



Main deck



Below maindeck

EMO provides all required maritime services related to the construction and the maintenance of an offshore wind farm, from a single source.

Our Services are structured within three main sectors:

>> MARITIME SERVICES

- CREW TRANSFER, GUARD & SAFETY VESSELS
- SHIP MANAGEMENT
- CHARTER MANAGEMENT
- COORDINATION SERVICES
 - » AUDITS & SURVEYS
 - » HSE COORDINATION
 - » CONSULTING
- EMS MARITIME OFFSHORE CREWING

>> TECHNICAL & ENGINEERING SERVICES

- TECHNICAL MANAGEMENT
- PROJECT MANAGEMENT
- SUPERVISION OF NEW- AND REBUILDING
- DESIGN & CONSULTING

>> PORT & LOGISTICS SERVICES

- OWN PORT INFRASTRUCTURE
- STORAGE AND WAREHOUSING
- AGENCY SERVICES
- LOCATION ADVICE & PROJECT MANAGEMENT
- TRANSPORT ON- AND OFFSHORE
- FULL SUPPLY CHAIN MANAGEMENT
- CARGO AND SUPPLY RUNS

Due to our experiences in guard duties, crew transfers, marine coordination and on-/offshore logistics we can offer you services which are able to match all requirements of your project.

To match national and international standards, the *EMO* is certified according [ISO 9001](#) and [ISO 14001](#).