

WINDEA six



General

Name:	Windea six
Flag:	German
IMO No:	9841603
Homeport:	Borkum
Length o.a.:	27,5 m
Load Line	
Length:	23,8 m
Max. Beam:	8,9 m
Max. Draught:	1,6 m
Max. Speed:	28 kn
Service Speed:	26 kn
Deadweight:	30 t
GT/NT:	219 / 65
Cargo Fwd:	2 x 10" or 1 x20" Container
Cargo Aft:	1 x10"Container
Cargo Deck Area:	81m ² Fwd 31m ² Aft
Max. deck Load:	2 t/m ²
Crew:	4
Passengers:	24

Technical Specifications

Main Engines:	4x Scania D16 076M (662 kW @2300 RPM)
WaterJets:	4 x Hamilton HM 521
Stabilizer:	Humphree Interceptors
Generator:	2 x Cummins Onan 27 ekW
Deck Crane:	1 x Palfinger PK 23500
Fuel Oil:	35.000 ltr
Fresh Water:	3.000 ltr
Bilge Water:	1.500 ltr
Seats:	Beurteaux 300 series Executive recliners c/w calf rests and foldout single leaf food trays and seatbelts.
Entertainment System:	3 x 32" LED Flat Screens / DVD Player / Audiosystem

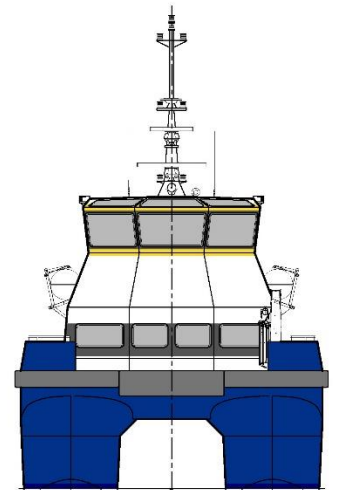
Navigation & Radio Equipment

2 Radars JRC JMA 5212 4BB (ARPA)	
Echosounder JMC F-3000W 50khz 1kW	
AP70 Autopilot IMO Pack Analog	
Hemisphere V103 Satellite Compass	
Furuno GP-170 GPS	
Navmaster 1000 ECDIS	
GMDSS DSC MF/HF Radio Furuno FS1575	
2 x Furuno GMDSS VHF Radio with DSC	
3 x McMurdo R5 GMDSS portable VHF Radio	
EPIRB: McMurdo E5 Smartfinder	
SART: McMurdo S4 9GHz Transponder	
AIS: CAMINO-701	
Navtex: Furuno NX-700A	
Magnetic Compass: Ritchie FM 201	
Sea Marshall SARfinder 1003-WF-MK3	
Sailor 150 Fledbroadband	
Radar Reflectors: Echomax Em230BR	
<u>OTHER</u>	CCTV

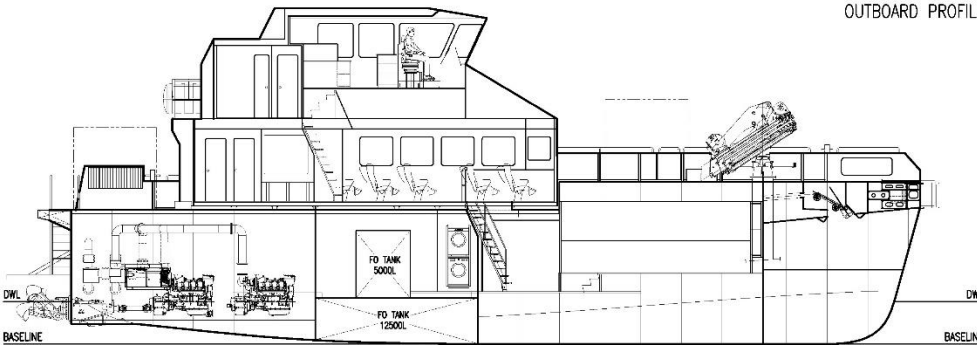
WINDEA six Wind Farm Service Vessel



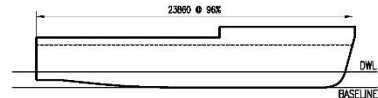
OUTBOARD PROFILE



VIEW ON BOW

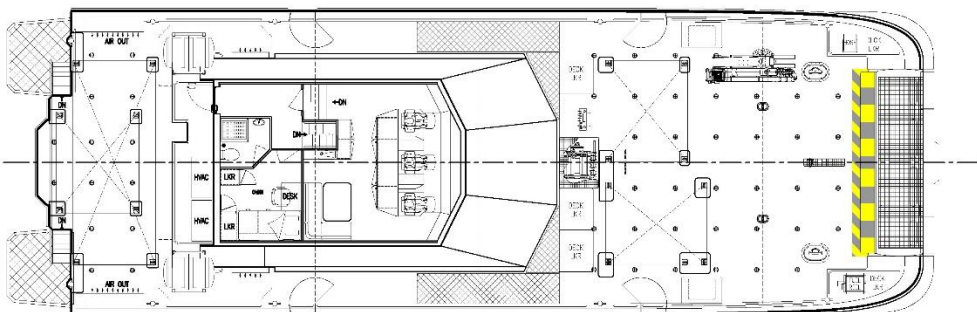


INBOARD PROFILE



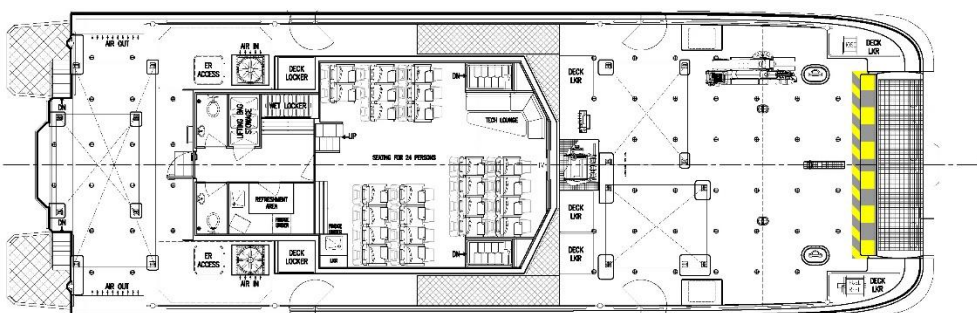
LOAD LINE LENGTH

FR.0	FR.1	FR.2	FR.3	FR.4	FR.5	FR.6	FR.7	FR.8	FR.9	FR.10	FR.11	FR.12	FR.13	FR.14	FR.15	FR.16	FR.17	FR.18	FR.19	FR.20	FR.21
TRANSOM	1200	2400	3600	4800	6000	7200	8400	9600	10800	12000	13200	14400	15600	16800	18000	19200	20400	21100	22300	23500	24700



PLAN VIEW BRIDGE

FR.0	FR.1	FR.2	FR.3	FR.4	FR.5	FR.6	FR.7	FR.8	FR.9	FR.10	FR.11	FR.12	FR.13	FR.14	FR.15	FR.16	FR.17	FR.18	FR.19	FR.20	FR.21
TRANSOM	1200	2400	3600	4800	6000	7200	8400	9600	10800	12000	13200	14400	15600	16800	18000	19200	20400	21100	22300	23500	24700



PLAN VIEW ON MAIN DECK

FR.0	FR.1	FR.2	FR.3	FR.4	FR.5	FR.6	FR.7	FR.8	FR.9	FR.10	FR.11	FR.12	FR.13	FR.14	FR.15	FR.16	FR.17	FR.18	FR.19	FR.20	FR.21
TRANSOM	1200	2400	3600	4800	6000	7200	8400	9600	10800	12000	13200	14400	15600	16800	18000	19200	20400	21100	22300	23500	24700

PRINCIPAL PARTICULARS	
LENGTH OVERALL:	27.5 m
LOAD LINE LENGTH:	23.8 m
LENGTH WATERLINE (DESIGN):	24.3 m
MAXIMUM MOULDED BEAM:	8.9 m
BEAM DEMIHULL CL - DEMIHULL CL:	5.95 m
HULL DESIGN DRAFT:	1.3 m
HULL SCANTLING DRAFT:	1.6 m
FUEL:	35000 L
FRESH WATER:	2900 L
BLACK WATER:	1500 L
PASSENGER CAPACITY:	24 PAX
CLASS:	LRS- 400A1, SSC, WORKBOAT, CATAMARAN, HSC, G3 MCH
MAX DEADWEIGHT:	30t
AFT CARGO AREA:	31m²
FWD CARGO AREA:	81m²
DECK LOADING:	20/m²

MACHINERY / PERFORMANCE	
MAIN ENGINES:	4x SCANIA D16 076M 692 kW @ 2300 rpm
WATERJETS:	4x HAMILTON HM521
SPEED @ 100%MCR 10t DWT :	28.0 knts
SPEED @ 85%MCR 10t DWT :	26.0 knts

