

WINDEA four



General

Name:	Windea four
Flag:	German
Homeport:	Borkum
Class built:	Bureau Vertias
Length o.a.:	27,5 m
Load Line	
Length:	23,8 m
Max. Beam:	8,9 m
Max. Draught:	1,6 m
Max. Speed:	32 kn
Service Speed:	26 kn
Deadweight:	30 t
GT/NT:	219 / 65
Cargo:	2 x 10" or 1 x 20" Container Fwd, 1 x 10" or 1 x 20" Container Aft
Cargo Deck Area:	81m ² Fwd 31m ² Aft
Deck Loading Cap.:	2 t/m ²
Crew:	4
Passengers:	24

Technical Specifications

Main Engines:	4x Scania D16 076M (662 kW @ 2300 RPM)
WaterJets:	4 x Hamilton HM 521
Stabilizer:	Humphree Interceptors
Generator:	2 x Cummins Onan 27 ekW
Deck Crane:	1 x Palfinger PK 23500 (2.350 kg @ 8,0m)
Fuel Oil:	35.000 ltr
Fresh Water:	3.000 ltr
Black Water:	1.500 ltr
Seats:	Beurteaux 300 series Executive recliners c/w calf rests and foldout single leaf food trays and seatbelts. Entertainment System: 3 x 32" LED Flat Screens / DVD Player / Audiosystem

Navigation & Radio Equipment

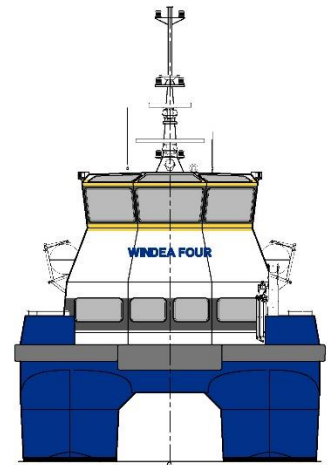
- 2 Radars JRC JMA 5212 4BB (ARPA)
- Echosounder JMC F-3000W 50khz 1kW
- AP70 Autopilot IMO Pack Analog
- Hemisphere V103 Satellite Compass
- Furuno GP-170 GPS
- Transas 1000 ECDIS
- GMDSS DSC MF/HF Radio Furuno FS1575
- 2 x Furuno GMDSS VHF Radio with DSC
- 3 x McMurdo R5 GMDSS portable VHF Radio
- EPIRB: McMurdo E5 Smartfinder
- SART: McMurdo S4 9GHz Transponder
- AIS: CAMINO-701
- Navtex: Furuno NX-700A
- Magnetic Compass: Ritchie FM 201
- Sea Marshall SARfinder 1003-WF-MK3
- Radar Reflectors: Echomax Em230BR

Other: Fuel transfer system, Rescue Star, WiFi

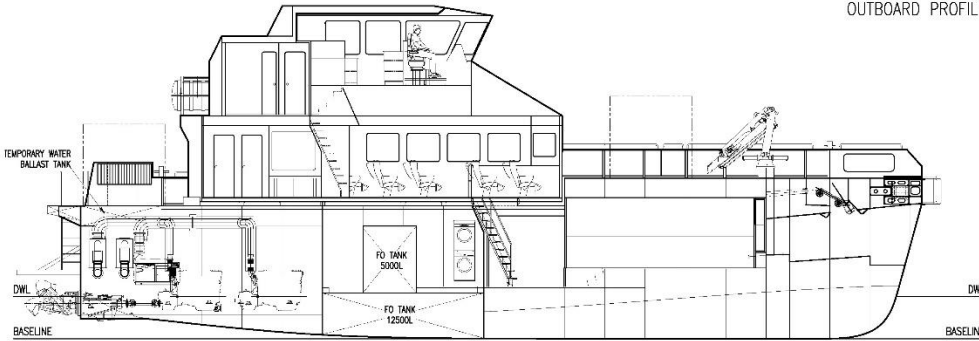
WINDEA four Wind Farm Service Vessel



OUTBOARD PROFILE

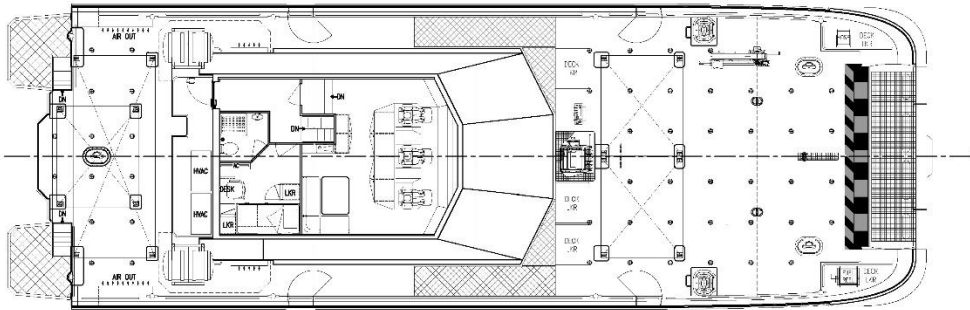


VIEW ON BOW



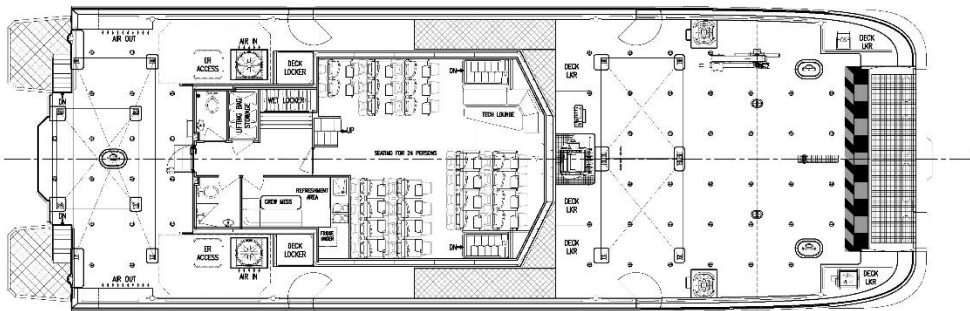
INBOARD PROFILE

FR.0	FR.1	FR.2	FR.3	FR.4	FR.5	FR.6	FR.7	FR.8	FR.9	FR.10	FR.11	FR.12	FR.13	FR.14	FR.15	FR.16	FR.17	FR.18	FR.19	FR.20	FR.21
TRANSOM	1200	2400	3600	4800	6000	7200	8400	9600	10800	12000	13200	14400	15600	16800	18000	19200	20400	21100	22300	23500	24700



PLAN VIEW BRIDGE

FR.0	FR.1	FR.2	FR.3	FR.4	FR.5	FR.6	FR.7	FR.8	FR.9	FR.10	FR.11	FR.12	FR.13	FR.14	FR.15	FR.16	FR.17	FR.18	FR.19	FR.20	FR.21
TRANSOM	1200	2400	3600	4800	6000	7200	8400	9600	10800	12000	13200	14400	15600	16800	18000	19200	20400	21100	22300	23500	24700



PLAN VIEW ON MAIN DECK

FR.0	FR.1	FR.2	FR.3	FR.4	FR.5	FR.6	FR.7	FR.8	FR.9	FR.10	FR.11	FR.12	FR.13	FR.14	FR.15	FR.16	FR.17	FR.18	FR.19	FR.20	FR.21
TRANSOM	1200	2400	3600	4800	6000	7200	8400	9600	10800	12000	13200	14400	15600	16800	18000	19200	20400	21100	22300	23500	24700

PRINCIPAL PARTICULARS	
LENGTH OVERALL:	27.5 m
LOAD LINE LENGTH:	23.8 m
LENGTH WATERLINE (DESIGN):	24.3 m
MAXIMUM MOULDED BEAM:	8.9 m
BEAM DEMIHULL CL - DEMIHULL CL:	5.95 m
HULL DESIGN DRAFT:	1.3 m
HULL SCANTLING DRAFT:	1.6 m
FUEL:	35000 L
FRESH WATER:	3000 L
BLACK WATER:	1600 L
PASSENGER CAPACITY:	24 OFFSHORE SERVICE / INDUSTRIAL PERSONNEL OF WHICH 12 CAN BE PASSENGERS
CLASS:	LRs®100A1, SSC, WORKBOAT, CATAMARAN, HSC, G3 MCH
MAX DEADWEIGHT:	30t
AFT CARGO AREA:	31m²
FWD CARGO AREA:	81m²
DECK LOADING:	2t/m²
BALLAST TANK:	2500 L

MACHINERY / PERFORMANCE	
MAIN ENGINES:	4x SCANIA DI16 077M 962 kW @ 2300 rpm
WATERJETS:	4x HAMILTON HM521
SPEED @ 100%MCR 10t DWT:	28.0 knts
SPEED @ 85%MCR 10t DWT:	26.0 knts

